



Bla

GL

V.2

GRAPHIC VARIATION 30

2

BERGSTEIN BEIGE RC (PRC) 60X60 /ARG04_S

BASIC CHARACTERISTICS:

Size (cm.):	60X60
Colour:	BEIGE
Series name:	BERGSTEIN
Family:	GLAZED PORCELAIN

TECHNICAL CHARACTERISTICS:

Fabrication process:	Dry pressed ceramic tile	
Absorption group (ISO 13006):	Bla	
Finish:	GL	
Rectified:	Yes	
Body:	STD Body	
Surface Finish:	Matt	
Work size (mm):	600 x 600 x 9	
Aesthetic classification and shade variations:	V.2	
Diferent design number:	30	
Facial dimension range and surface quality:	Complies with the standard	UNE EN ISO 10545-2

PHYSICAL CHARACTERISTICS:

Water absorption:	E ≤ 0.5	UNE EN ISO 10545-3
Braking strength (S):	> 1300 N	UNE EN ISO 10545-4
Flexural tensile strength (N/mm ²):	≥35 N/mm ²	
Resistance to superficial abrasion (PEI):	4	UNE EN ISO 10545-7
Lineal thermal expansion between 20° to 100°C	< 9*10 ⁻⁶ / °C	UNE EN ISO 10545-8
Thermic shock resistance:	Complies with the standard	UNE EN ISO 10545-9
Crazing resistance:	Complies with the standard	UNE EN ISO 10545-11
Durability; Freeze - thaw cycle:	Complies with the standard	UNE EN ISO 10545-12
Scratch hardness according to Mohs:	4	UNE EN 67-101-92

Certifications:



Slipperness:	Anti-slip Class 2	UNE-EN 16165 Appendix C
	Anti-slip R.10	UNE-EN 16165 Appendix B
	Antideslizante Clase A+B	UNE-EN 16165 Appendix A
	+36 Low slip potential	BS 7976-2:2002 PENDULUM

CHEMICAL PROPERTIES:

Resistance to home cleaning products and swimming pool salts:	Clase A	UNE EN ISO 10545-13
Resistance to High concentration acids and bases:	Complies with the standard	UNE EN ISO 10545-13
Resistance to Low concentration acids and bases:	Complies with the standard	UNE EN ISO 10545-13
Resistance to staining:	Complies with the standard	UNE EN ISO 10545-14

CE MARKING:



004CPR-PR/11-4-2013

IMPORTANT NOTES:

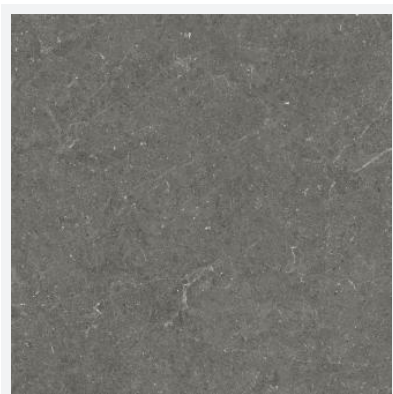
Before fixing tiles, please check the shade, calibre and choice. Claims regarding these items cannot be accepted once the materials has been fixed. Protecting the product during placement and appropriate cleaning after grouting and other work are part of a correct fitting process. For more information about the instalation and grouting visit the Argenta website: www.argentaceramica.com/en

The packing list of this pieces are indicated on the Argenta website:www.argentaceramica.com/packing-list. The stated weight is approximate, it may vary up to 5% depending on the model, the variation may begreater for products with relief.

Document with commercial information and cannot be used either judicially or administratively without the express permission of Argenta Ceramica S.L.The color of the tile of this technical data is for guidance only and may differ from the actual tile color.

Certifications:





Bla

GL

V.2

GRAPHIC VARIATION 30

2

BERGSTEIN DARK RC (PRC) 60X60 /ARG04_S

BASIC CHARACTERISTICS:

Size (cm.):	60X60
Colour:	DARK
Series name:	BERGSTEIN
Family:	GLAZED PORCELAIN

TECHNICAL CHARACTERISTICS:

Fabrication process:	Dry pressed ceramic tile	
Absorption group (ISO 13006):	Bla	
Finish:	GL	
Rectified:	Yes	
Body:	STD Body	
Surface Finish:	Matt	
Work size (mm):	600 x 600 x 9	
Aesthetic classification and shade variations:	V.2	
Diferent design number:	30	
Facial dimension range and surface quality:	Complies with the standard	UNE EN ISO 10545-2

PHYSICAL CHARACTERISTICS:

Water absorption:	E ≤ 0.5	UNE EN ISO 10545-3
Braking strength (S):	> 1300 N	UNE EN ISO 10545-4
Flexural tensile strength (N/mm ²):	≥35 N/mm ²	
Resistance to superficial abrasion (PEI):	3	UNE EN ISO 10545-7
Lineal thermal expansion between 20° to 100°C	< 9*10 ⁻⁶ / °C	UNE EN ISO 10545-8
Thermic shock resistance:	Complies with the standard	UNE EN ISO 10545-9
Crazing resistance:	Complies with the standard	UNE EN ISO 10545-11
Durability; Freeze - thaw cycle:	Complies with the standard	UNE EN ISO 10545-12
Scratch hardness according to Mohs:	4	UNE EN 67-101-92

Certifications:



Slipperness:	Anti-slip Class 2	UNE-EN 16165 Appendix C
	Anti-slip R.10	UNE-EN 16165 Appendix B
	Antideslizante Clase A+B	UNE-EN 16165 Appendix A
	+36 Low slip potential	BS 7976-2:2002 PENDULUM

CHEMICAL PROPERTIES:

Resistance to home cleaning products and swimming pool salts:	Clase A	UNE EN ISO 10545-13
Resistance to High concentration acids and bases:	Complies with the standard	UNE EN ISO 10545-13
Resistance to Low concentration acids and bases:	Complies with the standard	UNE EN ISO 10545-13
Resistance to staining:	Complies with the standard	UNE EN ISO 10545-14

CE MARKING:



004CPR-PR/11-4-2013

IMPORTANT NOTES:

Before fixing tiles, please check the shade, calibre and choice. Claims regarding these items cannot be accepted once the materials has been fixed. Protecting the product during placement and appropriate cleaning after grouting and other work are part of a correct fitting process. For more information about the instalation and grouting visit the Argenta website: www.argentaceramica.com/en

The packing list of this pieces are indicated on the Argenta website:www.argentaceramica.com/packing-list. The stated weight is approximate, it may vary up to 5% depending on the model, the variation may begreater for products with relief.

Document with commercial information and cannot be used either judicially or administratively without the express permission of Argenta Ceramica S.L.The color of the tile of this technical data is for guidance only and may differ from the actual tile color.

Certifications:





Bla

GL

V.2

GRAPHIC VARIATION 30

2

BERGSTEIN GREY RC (PRC) 60X60 /ARG04_S

BASIC CHARACTERISTICS:

Size (cm.):	60X60
Colour:	GREY
Series name:	BERGSTEIN
Family:	GLAZED PORCELAIN

TECHNICAL CHARACTERISTICS:

Fabrication process:	Dry pressed ceramic tile	
Absorption group (ISO 13006):	Bla	
Finish:	GL	
Rectified:	Yes	
Body:	STD Body	
Surface Finish:	Matt	
Work size (mm):	600 x 600 x 9	
Aesthetic classification and shade variations:	V.2	
Diferent design number:	30	
Facial dimension range and surface quality:	Complies with the standard	UNE EN ISO 10545-2

PHYSICAL CHARACTERISTICS:

Water absorption:	E ≤ 0.5	UNE EN ISO 10545-3
Braking strength (S):	> 1300 N	UNE EN ISO 10545-4
Flexural tensile strength (N/mm ²):	≥35 N/mm ²	
Resistance to superficial abrasion (PEI):	4	UNE EN ISO 10545-7
Lineal thermal expansion between 20° to 100°C	< 9*10 ⁻⁶ / °C	UNE EN ISO 10545-8
Thermic shock resistance:	Complies with the standard	UNE EN ISO 10545-9
Crazing resistance:	Complies with the standard	UNE EN ISO 10545-11
Durability; Freeze - thaw cycle:	Complies with the standard	UNE EN ISO 10545-12
Scratch hardness according to Mohs:	4	UNE EN 67-101-92

Certifications:



Slipperness:	Anti-slip Class 2	UNE-EN 16165 Appendix C
	Anti-slip R.10	UNE-EN 16165 Appendix B
	Antideslizante Clase A+B	UNE-EN 16165 Appendix A
	+36 Low slip potential	BS 7976-2:2002 PENDULUM

CHEMICAL PROPERTIES:

Resistance to home cleaning products and swimming pool salts:	Clase A	UNE EN ISO 10545-13
Resistance to High concentration acids and bases:	Complies with the standard	UNE EN ISO 10545-13
Resistance to Low concentration acids and bases:	Complies with the standard	UNE EN ISO 10545-13
Resistance to staining:	Complies with the standard	UNE EN ISO 10545-14

CE MARKING:



004CPR-PR/11-4-2013

IMPORTANT NOTES:

Before fixing tiles, please check the shade, calibre and choice. Claims regarding these items cannot be accepted once the materials has been fixed. Protecting the product during placement and appropriate cleaning after grouting and other work are part of a correct fitting process. For more information about the instalation and grouting visit the Argenta website: www.argentaceramica.com/en

The packing list of this pieces are indicated on the Argenta website:www.argentaceramica.com/packing-list. The stated weight is approximate, it may vary up to 5% depending on the model, the variation may begreater for products with relief.

Document with commercial information and cannot be used either judicially or administratively without the express permission of Argenta Ceramica S.L.The color of the tile of this technical data is for guidance only and may differ from the actual tile color.

Certifications:





Bla

GL

V.2

GRAPHIC VARIATION 30

2

BERGSTEIN IVORY RC (PRC) 60X60 /ARG04_S

BASIC CHARACTERISTICS:

Size (cm.):	60X60
Colour:	IVORY
Series name:	BERGSTEIN
Family:	GLAZED PORCELAIN

TECHNICAL CHARACTERISTICS:

Fabrication process:	Dry pressed ceramic tile	
Absorption group (ISO 13006):	Bla	
Finish:	GL	
Rectified:	Yes	
Body:	STD Body	
Surface Finish:	Matt	
Work size (mm):	600 x 600 x 9	
Aesthetic classification and shade variations:	V.2	
Diferent design number:	30	
Facial dimension range and surface quality:	Complies with the standard	UNE EN ISO 10545-2

PHYSICAL CHARACTERISTICS:

Water absorption:	E ≤ 0.5	UNE EN ISO 10545-3
Braking strength (S):	> 1300 N	UNE EN ISO 10545-4
Flexural tensile strength (N/mm ²):	≥35 N/mm ²	
Resistance to superficial abrasion (PEI):	4	UNE EN ISO 10545-7
Lineal thermal expansion between 20° to 100°C	< 9*10 ⁻⁶ / °C	UNE EN ISO 10545-8
Thermic shock resistance:	Complies with the standard	UNE EN ISO 10545-9
Crazing resistance:	Complies with the standard	UNE EN ISO 10545-11
Durability; Freeze - thaw cycle:	Complies with the standard	UNE EN ISO 10545-12
Scratch hardness according to Mohs:	4	UNE EN 67-101-92

Certifications:



Slipperness:	Anti-slip Class 2	UNE-EN 16165 Appendix C
	Anti-slip R.10	UNE-EN 16165 Appendix B
	Antideslizante Clase A+B	UNE-EN 16165 Appendix A
	+36 Low slip potential	BS 7976-2:2002 PENDULUM

CHEMICAL PROPERTIES:

Resistance to home cleaning products and swimming pool salts:	Clase A	UNE EN ISO 10545-13
Resistance to High concentration acids and bases:	Complies with the standard	UNE EN ISO 10545-13
Resistance to Low concentration acids and bases:	Complies with the standard	UNE EN ISO 10545-13
Resistance to staining:	Complies with the standard	UNE EN ISO 10545-14

CE MARKING:



004CPR-PR/11-4-2013

IMPORTANT NOTES:

Before fixing tiles, please check the shade, calibre and choice. Claims regarding these items cannot be accepted once the materials has been fixed. Protecting the product during placement and appropriate cleaning after grouting and other work are part of a correct fitting process. For more information about the instalation and grouting visit the Argenta website: www.argentaceramica.com/en

The packing list of this pieces are indicated on the Argenta website:www.argentaceramica.com/packing-list. The stated weight is approximate, it may vary up to 5% depending on the model, the variation may begreater for products with relief.

Document with commercial information and cannot be used either judicially or administratively without the express permission of Argenta Ceramica S.L.The color of the tile of this technical data is for guidance only and may differ from the actual tile color.

Certifications:





Bla

GL

V.2

GRAPHIC VARIATION 30

2

BERGSTEIN LIGHT RC (PRC) 60X60 /ARG04_S

BASIC CHARACTERISTICS:

Size (cm.):	60X60
Colour:	LIGHT
Series name:	BERGSTEIN
Family:	GLAZED PORCELAIN

TECHNICAL CHARACTERISTICS:

Fabrication process:	Dry pressed ceramic tile	
Absorption group (ISO 13006):	Bla	
Finish:	GL	
Rectified:	Yes	
Body:	STD Body	
Surface Finish:	Matt	
Work size (mm):	600 x 600 x 9	
Aesthetic classification and shade variations:	V.2	
Diferent design number:	30	
Facial dimension range and surface quality:	Complies with the standard	UNE EN ISO 10545-2

PHYSICAL CHARACTERISTICS:

Water absorption:	E ≤ 0.5	UNE EN ISO 10545-3
Braking strength (S):	> 1300 N	UNE EN ISO 10545-4
Flexural tensile strength (N/mm2):	≥35 N/mm2	
Resistance to superficial abrasion (PEI):	4	UNE EN ISO 10545-7
Lineal thermal expansion between 20° to 100°C	< 9*10 ⁻⁶ / °C	UNE EN ISO 10545-8
Thermic shock resistance:	Complies with the standard	UNE EN ISO 10545-9
Crazing resistance:	Complies with the standard	UNE EN ISO 10545-11
Durability; Freeze - thaw cycle:	Complies with the standard	UNE EN ISO 10545-12
Scratch hardness according to Mohs:	4	UNE EN 67-101-92

Certifications:



Slipperness:	Anti-slip Class 2	UNE-EN 16165 Appendix C
	Anti-slip R.10	UNE-EN 16165 Appendix B
	Antideslizante Clase A+B	UNE-EN 16165 Appendix A
	+36 Low slip potential	BS 7976-2:2002 PENDULUM

CHEMICAL PROPERTIES:

Resistance to home cleaning products and swimming pool salts:	Clase A	UNE EN ISO 10545-13
Resistance to High concentration acids and bases:	Complies with the standard	UNE EN ISO 10545-13
Resistance to Low concentration acids and bases:	Complies with the standard	UNE EN ISO 10545-13
Resistance to staining:	Complies with the standard	UNE EN ISO 10545-14

CE MARKING:



004CPR-PR/11-4-2013

IMPORTANT NOTES:

Before fixing tiles, please check the shade, calibre and choice. Claims regarding these items cannot be accepted once the materials has been fixed. Protecting the product during placement and appropriate cleaning after grouting and other work are part of a correct fitting process. For more information about the instalation and grouting visit the Argenta website: www.argentaceramica.com/en

The packing list of this pieces are indicated on the Argenta website:www.argentaceramica.com/packing-list. The stated weight is approximate, it may vary up to 5% depending on the model, the variation may begreater for products with relief.

Document with commercial information and cannot be used either judicially or administratively without the express permission of Argenta Ceramica S.L.The color of the tile of this technical data is for guidance only and may differ from the actual tile color.

Certifications:





Bla

GL

V.2

GRAPHIC VARIATION 30

2

BERGSTEIN PEARL RC (PRC) 60X60 /ARG04_S

BASIC CHARACTERISTICS:

Size (cm.):	60X60
Colour:	PEARL
Series name:	BERGSTEIN
Family:	GLAZED PORCELAIN

TECHNICAL CHARACTERISTICS:

Fabrication process:	Dry pressed ceramic tile	
Absorption group (ISO 13006):	Bla	
Finish:	GL	
Rectified:	Yes	
Body:	STD Body	
Surface Finish:	Matt	
Work size (mm):	600 x 600 x 9	
Aesthetic classification and shade variations:	V.2	
Diferent design number:	30	
Facial dimension range and surface quality:	Complies with the standard	UNE EN ISO 10545-2

PHYSICAL CHARACTERISTICS:

Water absorption:	E ≤ 0.5	UNE EN ISO 10545-3
Braking strength (S):	> 1300 N	UNE EN ISO 10545-4
Flexural tensile strength (N/mm ²):	≥35 N/mm ²	
Resistance to superficial abrasion (PEI):	4	UNE EN ISO 10545-7
Lineal thermal expansion between 20° to 100°C	< 9*10 ⁻⁶ / °C	UNE EN ISO 10545-8
Thermic shock resistance:	Complies with the standard	UNE EN ISO 10545-9
Crazing resistance:	Complies with the standard	UNE EN ISO 10545-11
Durability; Freeze - thaw cycle:	Complies with the standard	UNE EN ISO 10545-12
Scratch hardness according to Mohs:	4	UNE EN 67-101-92

Certifications:



Slipperness:	Anti-slip Class 2	UNE-EN 16165 Appendix C
	Anti-slip R.10	UNE-EN 16165 Appendix B
	Antideslizante Clase A+B	UNE-EN 16165 Appendix A
	+36 Low slip potential	BS 7976-2:2002 PENDULUM

CHEMICAL PROPERTIES:

Resistance to home cleaning products and swimming pool salts:	Clase A	UNE EN ISO 10545-13
Resistance to High concentration acids and bases:	Complies with the standard	UNE EN ISO 10545-13
Resistance to Low concentration acids and bases:	Complies with the standard	UNE EN ISO 10545-13
Resistance to staining:	Complies with the standard	UNE EN ISO 10545-14

CE MARKING:



004CPR-PR/11-4-2013

IMPORTANT NOTES:

Before fixing tiles, please check the shade, calibre and choice. Claims regarding these items cannot be accepted once the materials has been fixed. Protecting the product during placement and appropriate cleaning after grouting and other work are part of a correct fitting process. For more information about the instalation and grouting visit the Argenta website: www.argentaceramica.com/en

The packing list of this pieces are indicated on the Argenta website:www.argentaceramica.com/packing-list. The stated weight is approximate, it may vary up to 5% depending on the model, the variation may begreater for products with relief.

Document with commercial information and cannot be used either judicially or administratively without the express permission of Argenta Ceramica S.L.The color of the tile of this technical data is for guidance only and may differ from the actual tile color.

Certifications:

